

midland heart  
*housing, care and opportunity*



**FURNITURE**  
resource centre

**FRC GROUP**

**Saltbrook Place,  
Midland Heart**

0151 702 0570 | sales@frcgroup.co.uk



# Furniture Resource Centre & Homelessness Change



## Background

Furniture Resource Centre has been furnishing hostels for decades and our furniture range is the perfect blend of robust quality, and comfortable style, creating a welcoming and sustainable environment.

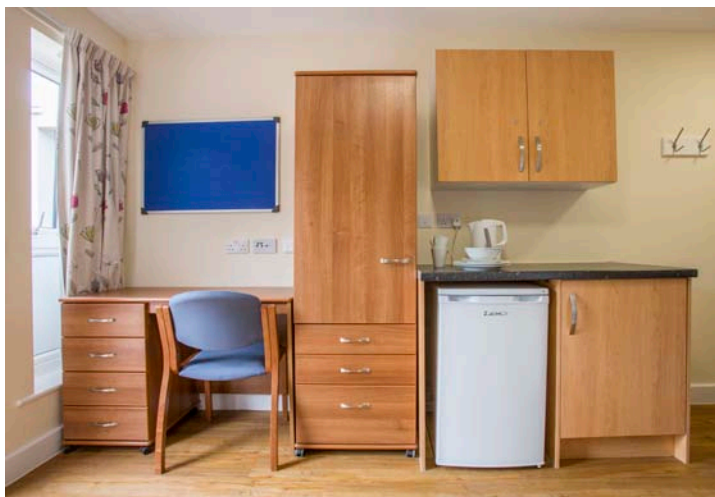
Saltbrook Place is a £5.7m flagship supported housing scheme in Dudley, providing accommodation to vulnerable adults and homeless people. It was developed by Midland Heart in partnership with Dudley Metropolitan Council, Homes and Community Agency, and Bullock Construction, and aims to help individuals overcome barriers to living independently.

The two storey development houses 58 accommodation units, including 24 ensuite rooms, and 34 one-bed apartments, available to individuals and couples - and some of the units even include kennels for dogs.

As well as the accommodation, Saltbrook Place also offers a wide range of support services, including an IT suite, learning kitchen, allotments, and access to mainstream health services, specialist agencies and colleges.

They required a furniture supplier who fully understands the diverse needs of the client group, with a wide, suitable range of furniture and furnishings, and who offers a full delivery and installation service. Having previously completed Oasis House for Midland Heart, another Homelessness Change scheme, we were delighted to work with them again on Saltbrook Place.





## Overview

Furniture Resource Centre supplied all of the furniture for this major scheme, furnishing everything from bedrooms and apartments, to IT suites, communal lounges and kitchens, offices and a quiet space/library.

We liaised closely with the construction partners to fit with their tight schedules and offering a flexible and responsive service to ensure that all deadlines were met.

The furniture for the apartments and bedrooms needed to create a comfortable, homely feel whilst also meeting contract standards to ensure everything would stand the test of time.

The different communal areas all needed their own distinct style while fitting into an overall design for the scheme. Our wide range of furniture in an attractive range of fabrics and colours meant we could work closely with the client to create a bright, welcoming design.

Our experience of working on a number of Homelessness Change projects around the country meant that we understood the particular needs of this scheme and were able to meet, and we hope exceed, all of them.



## Feedback

Sarah Smith from Bullocks said: **“This is a major scheme and one which will help to change the lives of homeless people in Birmingham.**

**We are pleased to be working with Furniture Resource Centre on this scheme, not only because of the quality of the furniture, the price and the customer service, but also because they really understand the particular needs of this client group.”**



12-14 Atlantic Way, Brunswick Dock, Liverpool, L3 4BE

[www.furnitureresourcecentre.co.uk](http://www.furnitureresourcecentre.co.uk) | [sales@frcgroup.co.uk](mailto:sales@frcgroup.co.uk) | 0151 702 0570

Registered in England 2296329 | Charity No: 700731